

## Hardware Installation Guide



## 1. Safety Notice and Warnings

### FCC Notice

This device complies with part 15 of the FCC Rules. Operation is subject to the following two conditions:

1. This device may not cause harmful interference.
2. This device must accept any interference received, including interference that may cause undesired operation.

No Telecommunications Network Voltage (TNV)-connected PCBs shall be installed.

This class A digital apparatus complies with Canadian ICES-003.

*Cet appareil numérique de la classe A est conforme à la norme NMB-003 du Canada.*

### CE Mark Warning

This is a Class A product. In a domestic environment, this product may cause radio interference, in which case the user may be required to take adequate measures.

### VCCI Warning

This is a product of VCCI Class A Compliance.

#### 注意

この装置は、情報処理装置等電波障害自主規制協議会（VCCI）の基準に基づく第一種情報技術装置です。この装置を家庭環境で使用すると電波妨害を引き起こすことがあります。この場合には使用者が適切な対策を講ずるよう要求されることがあります。

### Environmental Warning

Perchlorate Material - special handling may apply.

See [www.dtsc.ca.gov/hazardouswaste/perchlorate](http://www.dtsc.ca.gov/hazardouswaste/perchlorate).

This notice is required by California Code of Regulations, Title 22, Division 4.5, Chapter 33: Best Management Practices for Perchlorate Materials. This product/part includes a battery that contains Perchlorate material.

---

## 2. Ratings

AC input voltage – 110 - 240 VAC (auto-range)

Rated input current – 1.8 amps at 100 VAC; to .75 amps at 240 VAC

Rated input frequency – 60 - 50 Hz.

Dimensions – 8.5" x 2.5 x 10.8" (WxHxD)

### 3. Cautionary Statements

 **CAUTION**

This appliance is intended for installation in restricted areas only. Initial setup and maintenance should be performed by qualified personnel.

 **CAUTION**

Required operating conditions for the appliance are -

- Temperature: 10 to 35°C.
- Humidity, non-condensing: 8 to 90%.

 **CAUTION**

To prevent the unit from overheating, do not block air vents. For proper airflow, a minimum of 1- to 2-inch clearance is required. Keep appliance clear of obstructions and away from the exhaust of other equipment.

 **CAUTION**

Do not remove the cover from the appliance. The cover is to be removed by authorized personnel only. There are no serviceable parts provided inside.

 **CAUTION**

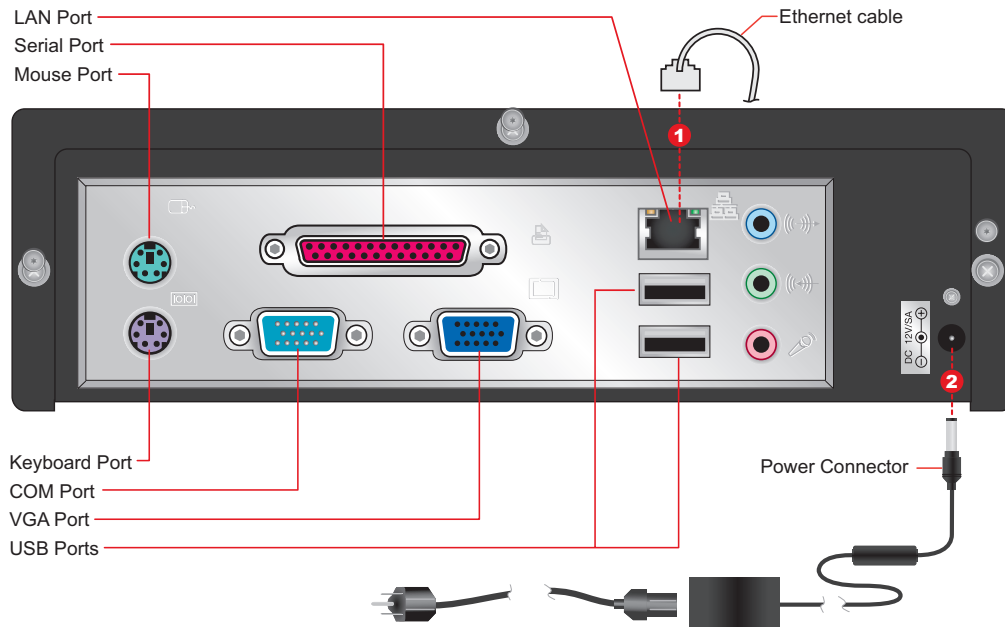
Failure to properly ground the appliance, either by circumventing the 3-wire grounding-type plug or by using a power outlet that is improperly grounded, can create a potentially hazardous electrical situation.

 **CAUTION**

Contact technical support if you need to replace the lithium battery on the motherboard to ensure proper replacement. There is a danger of explosion if the battery is replaced incorrectly. Replace only with the same or equivalent type recommended by the manufacturer. Dispose of used batteries according to the battery manufacturer's instructions.

## 4. Rear Panel Connections

**NOTE:** Crossover applications use the purple crossover cable



**Step 1** - Connect the Ethernet cable.

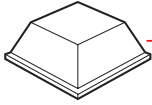
**Step 3** - Connect any other required cables.

**Step 2** - Connect the power cord.

**Step 4** - Power on the appliance.



## 5. Bottom Bumper Installation on the Appliance



Bottom bumpers must be installed when the appliance is going to be located in the horizontal position to keep it from sliding. These bumpers are peel-and-stick and should be placed on each corner on the bottom of the appliance as shown on the right.

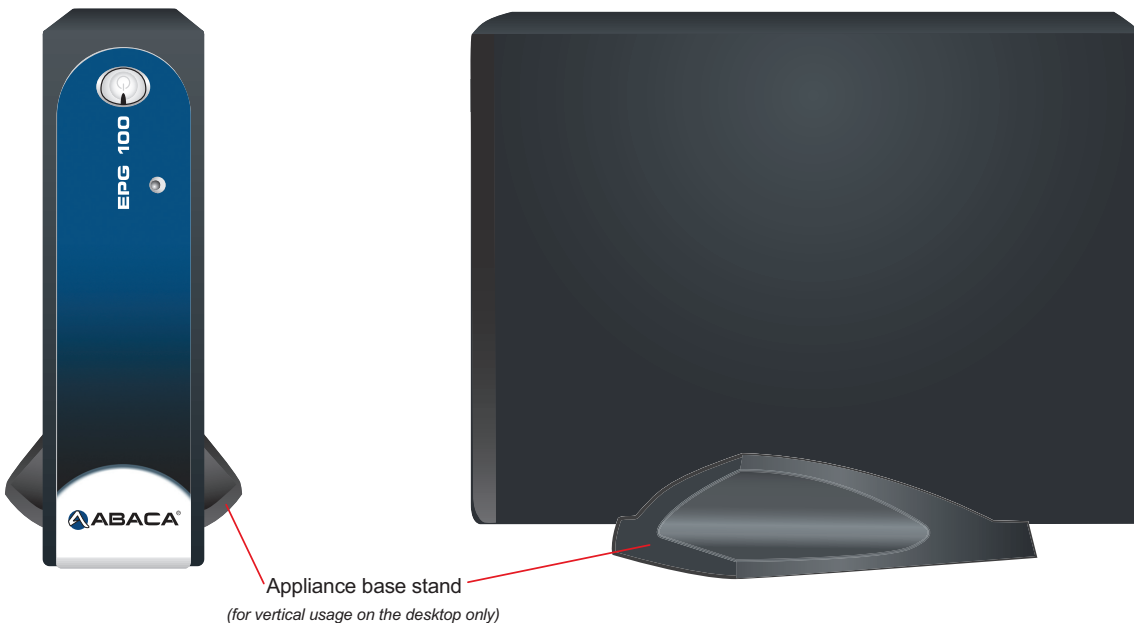


---

## 6. Vertical Position

The appliance can also be used in a vertical position. Insert the appliance into the base stand and position it in the center as shown below to keep it stable and from tipping.

**NOTE:** You do not need to install the bumpers to the bottom of the appliance as described above for this type of position.





**Abaca Technology Corporation**

1010 Rincon Circle  
San Jose, CA 95131 USA  
[www.abaca.com](http://www.abaca.com)

Toll Free: 877.GOABACA or 877.462.2222

Telephone: 408.571.6400

Fax: 408.571.6499

Email: [info@abaca.com](mailto:info@abaca.com)

Sales: 408.571.6405

[sales@abaca.com](mailto:sales@abaca.com)

Support: 408.571.6303

[support@abaca.com](mailto:support@abaca.com)

